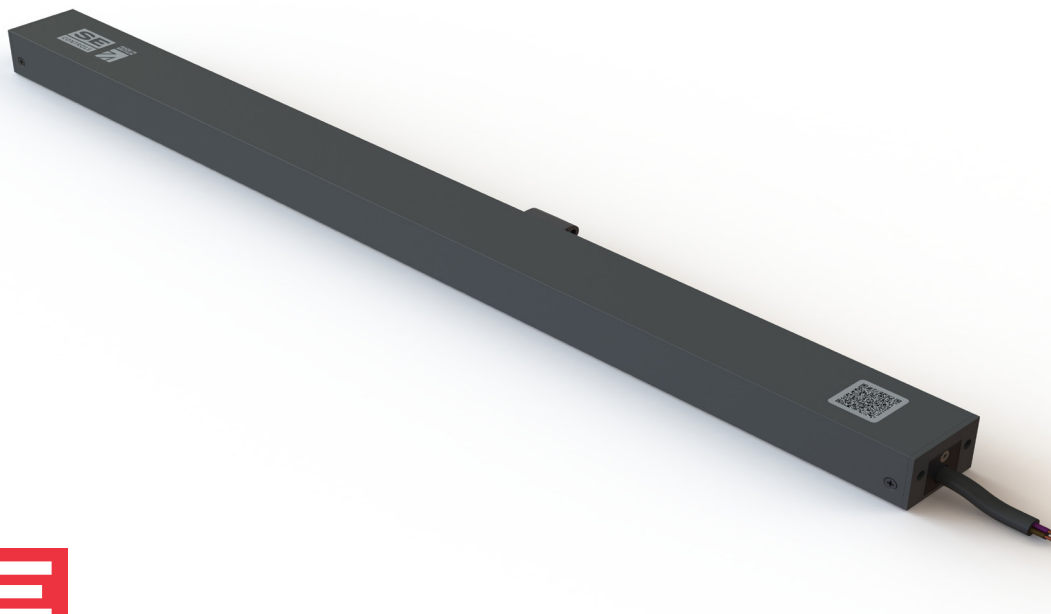


AT12 - Standard

Chain Actuator / 24 V / 0.5 A dc / 250 N



AT12 Standard Chain Actuator / 24 V / 0.5 A dc / 250 N

The AT12 Standard Chain Actuator has been designed to provide precise and reliable operation for environmental window automation ventilation and smoke ventilation applications.

Designed with decades of experience within the façade industry the AT12 can seamlessly integrate into a BMS or be operated via independent control panels, switches and sensors.

SE Controls manufacture this high-quality 'Made in Britain' actuator with the following features:

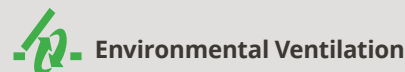
- Seamless two way communication with Building Management Systems via Modbus protocol
- Simple 2 wire open/close 24 V operation for non-BMS applications
- Slimline design with left hand/right hand connector (either end) for simple site cabling and connection
- Synchronised operation for up to four actuators + 2 Multi Point Locks (AT31) via the AT12 Enhanced actuator
- Precise opening control with true status and position feedback (via Modbus)
- Programmable functionality: opening and closing speed, seal relief, stroke
- Inbuilt cycle counting to provide operational frequency to protect warranty
- Product Warranty, 15,000 operational cycles or 12 months¹
- 425 mm maximum opening stroke for greater free area performance
- 2,000 N closed clamping force for increased security
- Operation via analogue 0-10 V input and permanent 24 V (short side only)

¹Commercial terms for each project will supersede this warranty information.

Meets the required maximum indoor ambient noise level under BS EN ISO 16032 : 2004 for BB93 : (2015)

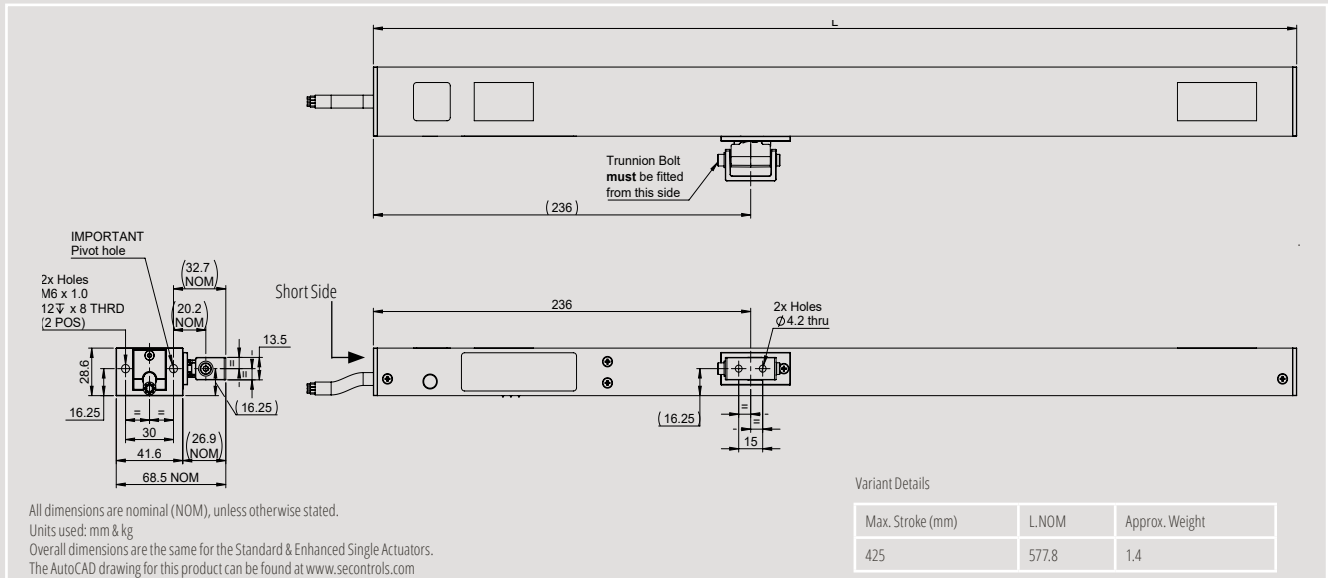


Application



Not suitable for Smoke Ventilation

Technical Drawing



Pivot Brackets

For the AT12 Standard Chain Actuator, there are several bracket options to choose from, which include **face fix** and **sill fix**.

If you require brackets for specific application needs, please get in touch with the SE Controls team at: info@secontrols.com

Note: Pivot Bracket should only be fitted to the front holes of the actuator end cap.

Controllers

Controller	No. Actuators ¹
3 AMP Transformer	6
NVLogIQ PSU	8
SHEVTEC Controller	16
30 AMP PSU	60

¹Recommended maximum number of actuators. The maximum number of actuators is based on optimum operating conditions, please contact SE Controls for more information.

NB: 24V actuators require control from a compatible low voltage unit such as an OS2 SHEVTEC controller or NVLogIQ[®] PSU.

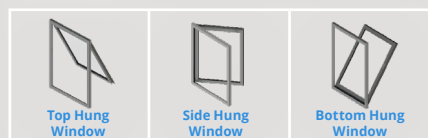
Product Codes

AT12 Chain Actuator 425mm ¹	A12S1A9XXXX
AT12 Cable Sub Assembly Grey 2m	FXSO1200002
AT12 Cable Sub Assembly Grey 3m	FXSO1220001
AT12 Cable Sub Assembly Grey 5m	FXSO1220002
AT12 Cable Sub Assembly Grey 10m	FXSO1220004

¹The cable sub assembly must be ordered separately.

Orientation

425 mm Stroke



Technical Data

Actuator Designation	AT12
Actuator Type	Chain Actuator
Voltage (all ± 5%)	24 V dc (Power open/power close or permanent power with Modbus)
Current Draw	0.5 A max at 250 N
Stroke	20 - 425 mm max
Operating Speed (Nominal)	1 - 5 mm/s
Ambient Operating Temp	-5°C to +60°C
IP Rating	IP30
Open Force	250 N max
Close Force	250 N max
Clamping Force	2,000 N
Soft Close	Yes
Switching	Electronic
Seal Relief	0 - 20 mm
Synchronisation	Up to 4 actuators + 2 MPL via AT12 Enhanced
Standard Finish Powder coated	RAL 7016 (Anthracite Grey) RAL 9005 (Jet Black) RAL 9006 (White Aluminium) RAL 9010 (Pure White)
Colour Option	Other colours available on request
Flex Length ¹	Various lengths, sold separately ¹
Flex Type	4 core silicone
Flex Colour	Grey or White ²
Duty Cycle	40% (max 3 minute continuous run time)
Product Warranty	15,000 operational cycles or 12 months ³
Application	Environmental Ventilation

¹Note: cable must be ordered separately, see product code information.

²This information is provided as guidance as raw materials and manufacturing processes differ therefore we cannot guarantee a precise match with the actuator body colour.

³Commercial terms for each project will supersede this warranty information.

Force Chart

